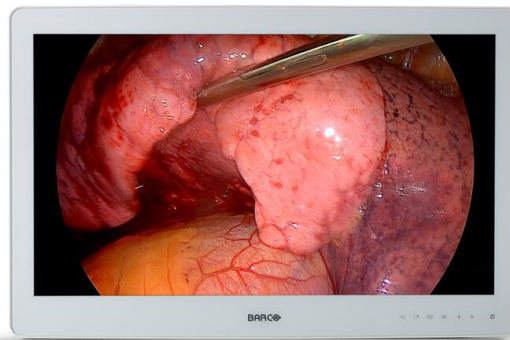
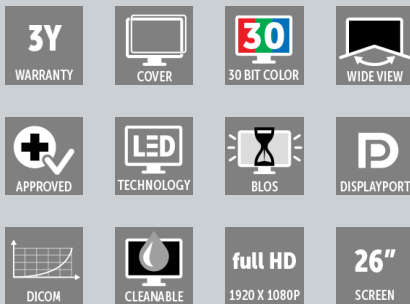


MDSC-2326

Full HD surgical display



- For the best hand-eye coordination
- Allows for easy cleaning and disinfection
- Works with Nexxis for video-over-IP integration

Barco's MDSC-2326 is a 26-inch, near-patient surgical display with LED backlight. Next to the renowned image quality of the MDSC-2226, the new scratch-resistant, high quality optical glass offers durable protection throughout the display's lifetime.

Ease of mind

Calibrated, artifact-free images

The display's stabilized brightness, high contrast and calibrated colors provide surgeons with excellent depth perception and the most accurate images from FHD endoscopy camera systems.

Multi-source, multi-display imaging

With its broad input connectivity, the MDSC-2326 offers flexible multi-modality imaging (PiP & PaP) in new integrated operating rooms. Featuring an integrated Barco Nexxis decoder (optional) it offers the most convenient visualization solution for uncompressed video-over-IP without delay.

Safety, stability and redundancy

Thanks to its LED backlight with light output stabilization, the display ensures lifetime-long performances and image consistency. It also offers a unique, automated failover feature so a backup signal is always available to ensure safe surgery

Ease of installation

The MDSC-2326 comes with a smart cable management system that hides the cables for a clutter-free set-up. Its lightweight design allows easy mounting on surgical booms and spring arms.

Ease of use

Barco's MDSC-2326 allows for easy cleaning and disinfection thanks to its smooth



surface, splash-proof housing (front protection level IP45). It comes with a highly durable, scratch-resistant front glass featuring excellent optical performance.

Barco's MDSC-2326 features:

- 26" wide-screen LCD
- Full HD resolution (1,920 x 1,080)
- High-bright LED backlight with output stabilization
- Wide viewing angle thanks to IPS-Pro LCD technology
- 10-bit image processing
- Artifact-free images
- Calibrated, consistent colors and grayscales
- Easy-clean design with sealed front (IPX5)
- Smart cable management system

PRODUCT SPECIFICATIONS**MDSC-2326**

Screen technology	TFT AM LCD
Active screen size (diagonal)	661 mm (26.0")
Active screen size (H x V)	576 x 324 mm (22.7" x 12.8")
Aspect ratio	16:9
Resolution	2MP (1920 x 1080)
Pixel pitch	0.300 mm
Color support	1073 million (10-bit)
Viewing angle	178° (panel typical)
Maximum luminance	500 cd/m ² (panel typical) 400 cd/m ² 'stabilized @6500K & ITU-709
Contrast ratio	1400:1 (panel typical)
Response time (Tr + Tf)	18 ms (typical)
Housing color	White RAL 9003
Video inputs	MDSC-2326 LED DVI-I (Digital & Analog – HDMI support) 3G-SDI(1x BNC) DisplayPort 1.1a Component Video RGBS / YPbPr (4xBNC) S-video (4-pin Mini DIN) Composite video / SOG (1xBNC) MDSC-2326 DDI DVI-I (Digital & Analog – HDMI support) DVI-D 2x 3G-SDI(2x BNC) DisplayPort 1.1a Component Video RGBS / YPbPr (4xBNC) S-video (4-pin Mini DIN) Composite video / SOG (1xBNC) MDSC-2326 MNA Same as MDSC-2326 LED + 1x Fiber Optic SFP+ (for uncompressed video over IP)
Video outputs	DVI-D S-video (4-pin Mini DIN) Composite video (1x BNC) 3G-SDI (BNC) / DDI version: 2 x 3G-SDI
Power requirements (nominal)	Power source for external power supply: 100 – 250 VAC / 47-63 Hz auto-switch Power source for display power input: +24 VDC / 2.5A
Power consumption	50W max (LED and DDI version) 75W max (MNA version)
Power management	DVI-DMPM states supported Power On state Active-Off state
Dot clock	165 MHz max (DVI)
Gamma curve	Native, 1.8, 2.0, 2.2, 2.4, DICOM
OSD languages	English, French, German, Spanish, Italian
Dimensions w/o stand (W x H x D)	640 x 419 x 87 mm (25.2 x 16.5 x 3.4")
Dimensions power supply (W x H x D)	210 x 103 x 52 mm (8.27 x 4.06 x 2.05")
Net weight w/o stand	9.4 kg (20.7 lbs) (LED and DDI version) 9.8 kg (21.6 lbs) (MNA version)
Net weight power supply	1.5 kg (3.31 lbs)

PRODUCT SPECIFICATIONS**MDSC-2326**

Net weight packaged w/o stand	12.5 kg (27.6 lbs) (LED and DDI version) 12.9 kg (28.4 lbs) (MNA version)
Power supply DC output cable length	2.5 m (8.2 ft)
Mounting standard	VESA (100 x 100 mm)
Screen protection	Protective, non-reflective glass cover
Recommended modalities	Endoscopy, Laparoscopy, PACS, PM, US, CT, MR
Certifications	CE (Medical Device Class I) ANSI/AAMI ES 60601-1:2005; A1:2012 – Med. El. Equip., Part 1: general req. for basic safety and essential performance CAN/CSA-C22.2 No. 60601-1: 2014 Medical Electrical Equipment – Part 1: General Requirements for Basic Safety and Essential Performance (Adopted IEC 60601-1:2005, third edition, 2005-12) IEC 60601-1: 2005 + CORR. 1:2006 + CORR. 2:2007 + A1:2012 (Medical electrical equipment – Part 1: General requirements for basic safety and essential performance) EN 60601-1: 2006 + A1:2013 + A12:2014 (Medical electrical equipment". Part 1: General requirements for safety) INMETRO
Supplied accessories	1x DVI-D video cable 1x printed User Guide (English) 1x documentation disc, containing all translations of the User Guide 1x external power supply 4 screws, 4 dented washers and an Allen key Mains cables
Optional accessories	Barco stand (K9302097A) Power extension cable 10m (K3495066) Power extension cable 30m (K3495068)
Warranty	3 years
Operating temperature	10 ~ 35°C for performance / 0 ~ 40°C for safety
Storage temperature	-20 ~ +60°C
Operating humidity	10 ~ 90% (non-condensing)
Storage humidity	10 ~ 90% (non-condensing)
Operating altitude	3000 m max
Storage altitude	12000 m max

Last updated: 29 Nov 2021

Technical specifications are subject to change without prior notice. Please check www.barco.com for the latest information.